



Southern Connecticut Polymer Clay Guild

Website: <http://scpcg.org>



Now-A-Newsletter

Virtual Meeting on: April 16, 11am Eastern Time
Zoom Meeting Pre-Start 10:45am

NAN Submissions: scpcgnan@gmail.com

Virtual Meeting Location: Zoom Meeting

Carole Monahan-Kampfe, President: compelledcraft@ymail.com

NAN Submitted by Michelle Pini

Helen Wyland Malchow, VP: silverthumb@earthlink.net

TAKE NOTE

Virtual Zoom Meeting: Carole Monahan is inviting you to a scheduled Zoom meeting.

Join Zoom Meeting

<https://us02web.zoom.us/j/6715873145?pwd=dFA1SE04aGpxVkFDS3kvTVRhMVJXZz09>

Meeting ID: 671 587 3145

Passcode: Wylwordz^8

AGENDA

Agenda (From Carole)

- Volunteers are needed for Clay ConneCTion 2022
- We need volunteers to help organize the (3) 30 min demos per day
- We need folks to volunteer to DO the demos
- Deadline Monday June 27th for demo Proposals
- Volunteers to moderate some of the breakout rooms
- Later in the day the breakout rooms will be less topical and more just a clay along group.

If there is a demo you would like to see either contact Carole or post your demo ideas on our Clay ConneCTion Facebook page. We will hold a board of directors meeting right after the April guild meeting.

Beside our 3 wonderful guest artists, we will have Sunday with syndee!



Speaking of syndee her silk screens are available on Create Along:
<https://createalong.com/collections/silkscreens?page=2>

This fantastic realistic rose tutorial:

<https://handmadeblossom.com/Two-colored-rose-Polymer-clay-tutorial-c130582251>



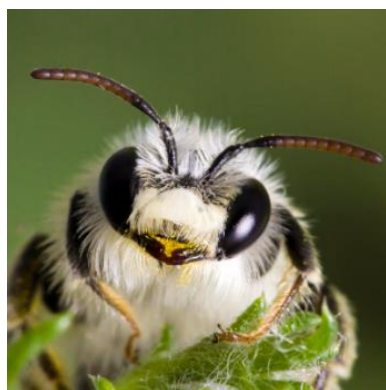
🌀 Guild Challenge – Reminder Due at May Meeting 🌀

What symbolizes Spring to you? Flowers, butterflies, leaves, Easter, Spring break, pets, bike riding, to name some. Should you decide to participate that is the question you have to answer. Create something that represents Spring to you!

But it can't be that simple, so whatever you make you need to create it in two ways; both 2D and 3D. The 2D version can actually be a photo or drawing; extra points for anyone who actually creates the 2D version as well in clay, but it is not required. (This part of the challenge will be the core of a future challenge as well)

The third element is color. We want to see vibrant colors. Challenge yourself to use a color pallet you don't normally use. Have fun with it.

Spring, 2D and 3D Creations, and Vibrant Colors. Due at the May 21st Meeting. -- Some Spring Ideas:



From Sharon:



Denise Fitzsimmons 13h · 🌐

Guess who is the new VP of Communications for the IPCA? Yup...ME! I am so grateful and blessed to be working with an amazing and talented group of board members.

What is the IPCA, you ask? Well, it is only the coolest place to be if you are into polymer clay at all! No matter where you are on your pc journey, from beginner to expert, the IPCA is the association for you. It is an international community of polymer clay people who come together via zoom, email, website, and social media to learn, show and tell, recognize, and give accolades!

For \$35 a year, you almost can't NOT join. The benefits outweigh the cost times over. In addition to the learning and friendships, we have two zoom get togethers a week (Wednesdays and Sundays) and a fantastic series of zoom specials! BUT WAIT, THERE'S MORE! Every year, we hold the Kato, Sculpey, Cernit, and Fimo sponsored Global Exhibition with categories for just about everyone.....with winners!

No matter what you do with polymer clay: from jewelry, to mixed media, to miniatures, to earrings, to vessels, to sculpture to..... more and more and more..... the IPCA is the place for you.

Go to <https://www.theipca.org/> and click on "join" for information on how to join today! Or message me for more info! #theipca

IPCA INTERNATIONAL
POLYMER CLAY
ASSOCIATION

A Message from:



Hello, Friends,

After many years and many good intentions (unrealized), I have finally started up my YouTube channel. Thanks to Leslie, I know how to upload! I have meant to do this for so long but, semi-luddite that I am, it was very hard for me to get the whole methodology of YouTube. It still confuses me!

So, I have been very busy uploading Basic Tutorials. Best to start at the beginning, I think. It will take a while to populate the channel with all the basic info I want but it will happen. These Basic Tutorials are the foundation for so many of my classes and projects and once they are up, then I can begin posting classes that utilize them.

Please stop by and watch some videos. I am trying to stick to a schedule of releases on Wednesday and Saturday. Watch and if you approve or if you want more, please do subscribe and like what you watch. Here is the link to my channel:

Donna's Youtube: <https://www.youtube.com/channel/UCeRlb3K2k-b1QAGYDuW1IQ>

Let me know what you think! Let me know if you'd like me to cover anything in particular. I will do my very best to answer and maybe do a video in response. Hope to see you there!

Hugs, D

After over 20 years Kato PolyClay is having its first price increase. Starting June 1st the SRP on large 12.5 oz bars will go from \$10.09 MSRP to 12.95 MSRP. 2oz bars will go from \$2.39 MSRP to \$2.75 MSRP. We will keep our prices as they are now until then.

If you do production I would advise loading up now at these prices. We will keep fresh stock coming in for you!! And, as always thank you for your support, we do appreciate it.

Best,

Vernon and Donna

☞ TRAVELING EXHIBIT ☞

The Traveling Exhibit – Dorian Merriman-Boddy is our Traveling Exhibit Coordinator. With setup help from a number of other members, our Exhibit will continue to inspire those with artistic interest.

Traveling Exhibit Locations: On Hold at this time

Contact Dorian to schedule the Traveling Exhibit in a Library or other public space near you.

dorianmboddy@gmail.com

☞ MEETING MINUTES ☞

Virtual Meeting

March Meeting
Clay ConneCTion: Teachers/Guests, Dates, and Help
Show-n-Tell/Help

☞ New Members ☞

New Members are always Welcome!

Where do we meet?

Sept-June:

Virtual Meetings

July & August:

Until Further Notice

(See our website for directions)

Meetings are usually on the 3rd Saturday of each month at 11 am. Check our website for location/time changes, or email scpcg@scpcg.org if you are welcome to attend and join.

(There is no fee for the first meeting, so come see what we're about)

Southern CT Polymer Clay Guild

Visit our guild website:

<http://www.scpcg.org>



The Bottles of Hope website is:

<https://www.bottlesofhope.org>

SCPCG Facebook Page:

<https://www.facebook.com/scpcg.org>

NAN Submitted by
Michelle Pini

scpcgnan@gmail.com