



Southern Connecticut Polymer Clay Guild

Website: <http://scpcg.org>



# Now-A-Newsletter

*Virtual Meeting on:* August 20, 2022, 11am Eastern Time  
*Zoom Meeting Pre-Start* 10:45am

NAN Submissions: [scpcgnan@gmail.com](mailto:scpcgnan@gmail.com)

**Virtual Meeting Location:** Zoom Meeting

Carole Monahan-Kampfe, President: [compelledcraft@ymail.com](mailto:compelledcraft@ymail.com)

Helen Wyland Malchow, VP: [silverthumb@earthlink.net](mailto:silverthumb@earthlink.net)

NAN Submitted by Michelle Pini

## ☞ TAKE NOTE ☞

**Virtual Zoom Meeting:** Carole Monahan is inviting you to a scheduled Zoom meeting.

Join Zoom Meeting

<https://us02web.zoom.us/j/6715873145?pwd=dFA1SE04aGpxVkFDS3kvTVRlMVJXZz09>

Meeting ID: 671 587 3145

Passcode: Wylwordz^8

## ☞ AGENDA ☞

- Clay ConneCTion 2022 Recap
- Guild Challenge 2D to 3D (due: September meeting)
- Show-n-Tell/Help

**MarinaShestorkina (Polymer Clay Flowers)**

[https://www.etsy.com/shop/MarinaShestorkina?ref=simple-shop-header-name&listing\\_id=1197993354](https://www.etsy.com/shop/MarinaShestorkina?ref=simple-shop-header-name&listing_id=1197993354)



## Links from Clay Connection

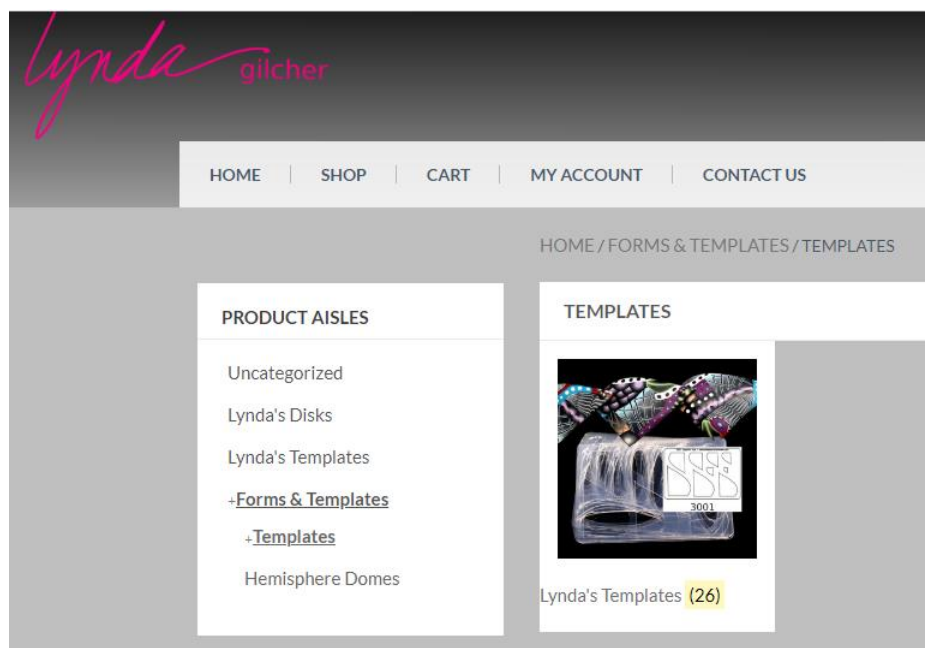
### Links from Clay Connection

This is the Wee Folk site that Sherman mentioned in his class: <https://www.weefolk.com/index-secure.htm>



This is Lynda Gilcher's site that Libby mentioned where she buys her templates from:

<http://www.lyndagilcher.com/product-category/polymer-clay-forms-templates/polymer-clay-forms-templates-templates/>

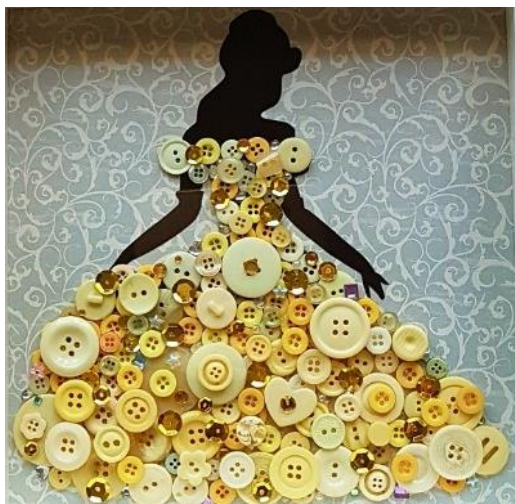


## 🌀 Guild Challenge 🌀

Our May challenge was to create a representation of spring in both 2D and 3D. I also mentioned that the 2D/3D aspect would be the core of a future challenge as well. Well now I get to share it with you. Your challenge is to bring 2D to life. Make some aspect of a 2D object 3D. It could be a picture of flowers in a vase and then a flower comes right out of the picture. I actually saw a cool example of this, but unfortunately cannot find it. However it was of a ship being dragged down by a sea monster. The artist had some tentacles coming right out of the picture hugging the frame.

It doesn't have to be elaborate you can keep it simple. A small object like a button, a balloon or even a kitten's paw emerging from the image. Just use your imagination and have fun. Any theme, color, or technique can be used. With Clay ConneCTion coming up I want to give everyone plenty of time. This challenge will be due at the September 2022 meeting.

Some ideas for inspiration are below, but remember 3D elements need to be made of polymer clay:



## Other Items of Interest

From Linda Wentink:

My hubby is an engineer. He heard me complaining about my bullseye canes having all the white concentrated in the center and too much dark at the outside and used math to come up with a solution, which I call the "Allan curve," since he invented it. It makes a bullseye cane with more evenly distributed color, which is helpful in canes that use the bullseye as a component. I am not a math person so I'll let his explanation speak for itself. It works. You could send it around to the caning people if you like. Everyone is free to use it so long as they call it the Allan curve, so he gets credit. I demo'd it to our Baltimore Polymer Clay Guild some years ago, and to the people at Shrinemont. (Both before covid, of course.)

I've also included a demo I gave our Baltimore guild in 2017 using a bullseye made with the Allan Curve, which you can also send around to the caners, if you want.

The demo will be sent as attachments with this NAN. (Thank you Linda)

-----

Ornamento Blog:

<https://ornamento.blog/2022/07/28/new-tools-for-making-polymer-clay-earrings>

Bow Files and Sanding Blocks from Rockwell Exchange on Etsy:

<https://www.etsy.com/listing/1068139734/detail-sanding-blocks-sanding-bow-for>



### TRAVELING EXHIBIT

The Traveling Exhibit – Dorian Merriman-Boddy is our Traveling Exhibit Coordinator. With setup help from a number of other members, our Exhibit will continue to inspire those with artistic interest.

**Traveling Exhibit Locations:** On Hold at this time

Contact Dorian to schedule the Traveling Exhibit in a Library or other public space near you.

[dorianmboddy@gmail.com](mailto:dorianmboddy@gmail.com)

### MEETING MINUTES

Virtual Meeting

July Meeting  
Clay ConneCTion Preparation  
Show-n-Tell/Help

### New Members

New Members are always welcome!

#### Where do we meet?

Sept-June:

**Virtual Meetings**

July & August:

**Until Further Notice**

(See our website for directions)

Meetings are usually on the 3rd Saturday of each month at 11 am. Check our website for location/time changes, or email [scpcg@scpcg.org](mailto:scpcg@scpcg.org). We welcome to attend and join.

(There is no fee for the first meeting, so come see what we're about)

#### Southern CT Polymer Clay Guild

Visit our guild website:

<http://www.scpcg.org>



The Bottles of Hope website is:

<https://www.bottlesofhope.org>

SCPCG Facebook Page:

<https://www.facebook.com/scpcg.org>

NAN Submitted by  
**Michelle Pini**

[scpcgnan@gmail.com](mailto:scpcgnan@gmail.com)